

200300077402  
Filed for Record in  
DELAWARE COUNTY, OHIO  
KAY E. CONKLIN  
11-14-2003 At 03:24 pm.  
DECLAR AMEN 92.00  
OR Book 444 Page 1687 - 1695

SIXTH AMENDMENT  
TO  
DECLARATION OF CONDOMINIUM  
HOMESTEAD AT HIGHLAND LAKES CONDOMINIUM  
COLUMBUS, OH 43251

200300077402

OR 189 P.1504  
Cab 2 Sl. 715

This sixth amendment to the Declaration of HOMESTEAD AT HIGHLAND LAKES CONDOMINIUM is made on or as of the 13<sup>th</sup> day of November 2003.

Recitals

A. Homestead at Highland Lakes Condominium is a condominium created pursuant to the provisions of Chapter 5311 of the Revised Code of Ohio ("the Condominium Act") by the filing of the Declaration of Homestead at Highland Lakes Condominium and the Drawings thereof, recorded, respectively, as Official Record Volume 189, pages 1504-1547, and Plat Cabinet 2, Slide 715, et seq., both of the records of the Recorder of Delaware County, Ohio, and all amendments thereto.

B. Pursuant to the provisions of Article XVII of the Declaration, and the provisions of the Condominium Act, Declarant, Homestead Highland Lakes, LLC., desires by this amendment to add a portion of the Additional Property to the Condominium, which Additional Property, hereinafter described, meets all of the criteria and qualifications for addition to the Condominium described in that Article.

Declaration

NOW THEREFORE, Declarant, the sole creator of the Condominium and the sole owner of the property hereinafter described to be added to the Condominium, hereby declares the Condominium Property of the Condominium to be expanded by addition of the property hereinafter described, as follows:

- Definitions. All terms used herein shall have the same meanings as those terms have as used and defined in the Declaration.
- Additional Property Added. A legal description of the portion of the property added hereby to the Condominium Property, consisting of 0.340 acre, more or less, is described in the attachment hereto, marked "Exhibit A", and hereby made a part hereof. A sketch site plan showing the composition of the property added hereby is attached hereto, marked "Exhibit B", and hereby made a part hereof. A plot plan showing the relationship of the property added hereby to the property already a part of the Condominium is attached hereto, marked "Exhibit C", and hereby made a part hereof.
- Name. The Condominium, as expanded hereby, shall continue to be named "Homestead at Highland Lakes Condominium".
- Purposes. The purposes of the Condominium shall continue to be as set forth in the Declaration (encompassing the additional property added hereby).
- Improvement Description. The Additional Property added to the Condominium Property hereby contains one (1) freestanding single-family traditional style residential building and expands the Condominium to contain twenty-one (21) dwelling units, each of which is called a "Unit". The residential building is one and one-half story with a partial basement, attached two-car garage, a Florida room and a patio. The building is of wood frame construction, on a concrete block foundation, with an asphalt shingle roof and exterior of either concrete product or wood product siding and some brick or stone. The principal materials of which the building is constructed are wood, glass, concrete, brick or stone, asphalt shingle, and drywall. In addition, there are green and landscaped areas, a private drive and a parking area. All improvements on the property added hereby are compatible in terms of quality of construction, principal materials used, and architectural style and design to the improvements now a part of the Condominium Property.

(continued next page)

CERTIFICATE OF AUDITOR

A copy of this Sixth Amendment to the Declaration for Homestead at Highland Lakes Condominium, together with the Sixth Amendment to the Drawings attached thereto, were filed with this office on November 14<sup>th</sup>, 2003.

Delaware County Auditor

Todd A. Hanks

By Stines  
Deputy Auditor

6. Units.

a. Unit Designations. The Unit added to the Condominium hereby is legally designated on the amendment to the Drawings filed simultaneously herewith, and attached hereto (although the same may be detached herefrom upon filing by the Delaware County Recorder and filed in separate records), labeled "Sixth Amendment to Condominium Drawings of Homestead at Highland Lakes Condominium," by a Unit designation, which is a combination of a number corresponding with the numerical portion of the street address of that Unit, a dash (-) and a number corresponding with Declarant's number of the building in which that Unit is situated. An example of a proper Unit designation is "5233-15". A listing of the type and composition of all Units that may be in the Condominium is set forth on the exhibit attached hereto, marked "Exhibit D", and hereby made a part hereof. The Unit designation of the Unit added hereby and of each Unit heretofore part of the Condominium is set forth on "Exhibit E" attached hereto and hereby made a part hereof.

b. Composition of Units. The Unit added hereby consists of the space in the building designated on the amendment to the Drawings filed simultaneously herewith with that Unit's Unit designation, including and excluding, as appropriate, those same items as are described and defined in the description of Unit types on Exhibit D and in the Declaration. The type of each Unit is shown on the attached Exhibit E. Floor plan layout and elevation drawings for the Unit added hereby are shown on the amendment to the Drawings filed simultaneously herewith.

c. Unit Locations. The location of the Unit added hereby is shown on the amendment to the Drawings filed simultaneously herewith, and is also shown on Exhibit B. The Unit has direct access to Common Elements leading directly to Alston Grove Drive, a public street.

7. Common and Limited Common Elements.

a. Common Elements. All of the additional property hereby added hereto, including all of the land and all improvements thereon and appurtenances thereto, except those portions labeled or described herein or in the amendment to the Drawings filed herewith as a part of a Unit, are Common Elements.

b. Limited Common Elements. Those portions of the Common Elements that are added hereby that are labeled or designated as "limited common elements" or "limited common areas" on the amendment to the Drawings filed herewith are Limited Common Elements. These Limited Common Elements consist of a driveway area immediately in front of the garage serving that Unit, one or more unenclosed porches, in some instances, one or more patio and/or yard areas and the improvements within those areas (except improvements that serve other Units), in some instances, and a yard area around the Unit. In each case, a Limited Common Element is reserved for the exclusive use of the Unit or Units which those improvements are designed or designated to serve.

c. Undivided Interests. The undivided interest in the Common Elements of each Unit in the Condominium, as expanded hereby, and as thereby allocated and reallocated, are as designated on the attached Exhibit E, and, in each case, is based on a par value for each type of Unit that is set forth on Exhibit D. These par values have been assigned on the basis of various factors, including fair market values, replacement costs, relative sizes, and simplicity. Undivided interests have been adjusted at thousandths of a percent, in Declarant's discretion, so that the total of undivided interests equals exactly 100.000%. This exhibit supersedes, in its entirety, Exhibit C of the Declaration, and all amendments thereto. The Common Elements shall be owned by the Unit owners as tenants in common, and ownership thereof shall remain undivided. No Unit owner may waive or release any rights in the Common Elements. Further, the undivided interest of a Unit in the Common Elements shall not be separated from the Unit to which it appertains.

8. Effects of Expansion. Upon the filing for record of this amendment to the Declaration adding additional property to the Condominium Property:

a. the added portion shall thereafter be subject to and benefited by all of the terms and provisions of the Declaration, to the same extent and with the same effect as if that added portion had been provided herein as constituting part of the Condominium Property, that is, the rights, easements, covenants, restrictions and assessment plan set forth therein shall run with, bind and benefit the added portion in the same manner, to the same extent, and with the same force and effect as the terms of the Declaration apply to the Condominium Property;

b. the owner or owners of the added portion shall thereupon become members, to the same extent, with the same effect, subject to the same obligations, and imbued with the same rights, as all other members; and

c. in all other respects, all of the provisions of the Declaration shall include and apply to such additional portion, and to the owners, mortgagees and lessees thereof, with equal meaning and of like force and effect.

IN TESTIMONY WHEREOF, the undersigned has executed and acknowledged this instrument this 13 day of November 2003.

HOMESTEAD HIGHLAND LAKES, LLC.,  
an Ohio limited liability company

By Kathleen Foster  
Kathleen Foster, Vice-President

STATE OF OHIO  
COUNTY OF FRANKLIN, SS:

This instrument was acknowledged before me by Kathleen Foster, the Vice-President of Homestead Highland Lakes, LLC., an Ohio limited liability company, on behalf of said limited liability company, this 13<sup>th</sup> day of November 2003.

Karen L Baker  
Notary Public



KAREN L. BAKER  
NOTARY PUBLIC, STATE OF OHIO  
MY COMMISSION EXPIRES JAN. 25, 2004

This instrument prepared by Calvin T. Johnson, Jr., attorney at law, Loveland & Brosius, 50 West Broad Street, Columbus, Ohio 43215-5917.

EXHIBIT A

SIXTH AMENDMENT  
DECLARATION OF CONDOMINIUM  
HOMESTEAD AT HIGHLAND LAKES CONDOMINIUM

Legal Description, Property Added  
(0.340 acre)

Situate in the State of Ohio, County of Delaware, Township of Genoa, lying in Farm Lot No. 13, Section 2, Township 3 North, Range 17 West, United States Military Lands and being part of an original 37.521 acre tract conveyed to Homestead Highland Lakes, LLC. by deed of record in Official Record 86, Page 350, records of the Recorder's Office, Delaware County, Ohio and being more particularly described as follows:

**Beginning** at an iron pin found at a northwesterly corner of "HOMESTEAD AT HIGHLAND LAKES CONDOMINIUM-THIRD AMENDMENT", a condominium plat of record in Plat Cabinet 3, slide 144, said iron pin also being in the southerly line of a 20.99 acre tract conveyed to Harold B. and Joan C. Derstine by deed of record in Deed Volume 498, Page 644:

Thence South 03°33'35" West, a distance of 248.32 feet, along a westerly line of said "HOMESTEAD AT HIGHLAND LAKES CONDOMINIUM-THIRD AMENDMENT", to an iron pin found;

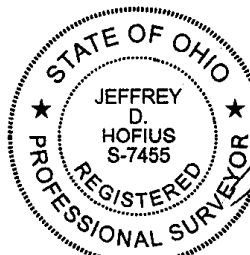
Thence North 86°26'25" West, a distance of 60.20 feet, along a northerly line of said "HOMESTEAD AT HIGHLAND LAKES CONDOMINIUM-THIRD AMENDMENT", to an iron pin set;

Thence North 03°33'35" East, a distance of 243.74 feet, over and across said original 37.521 acre tract, to an iron pin set in the line common to said original 37.521 acre tract and said 20.99 acre tract;

Thence North 89°12'17" East, a distance of 60.37 feet, along the line common to said original 37.521 acre tract and said 20.99 acre tract, to the **Point of Beginning**. Containing 0.340 acres, more or less, and being subject to all easements, restrictions, and rights-of-way of record.

The bearings hereon are based on the grid bearing of North 33°53'06" East for the centerline of Worthington road in the Ohio State Plane coordinate system, North Zone, as determined by a series of GPS observations on September 14, 1999.

R.D. ZANDE & ASSOCIATES, INC.



JEFFREY D. HOFIUS  
 S-7455  
 Jeffrey D. Hofius  
 Registered Surveyor No. S-7455

*[Signature]*  
 Date 10/30/03

**EXHIBIT B**  
**SIXTH AMENDMENT TO**  
**CONDOMINIUM DRAWINGS**  
**OF**  
**HOMESTEAD AT**  
**HIGHLAND LAKES CONDOMINIUM**

LINE TABLE		
LINE	BEARING	DISTANCE
L1	N 85°26'25" W	60.20'
L2	N 89°12'17" E	60.37'

SIXTH AMENDMENT  
HOMESTEAD AT HIGHLAND  
LAKES CONDOMINIUM  
0.340 ACRES

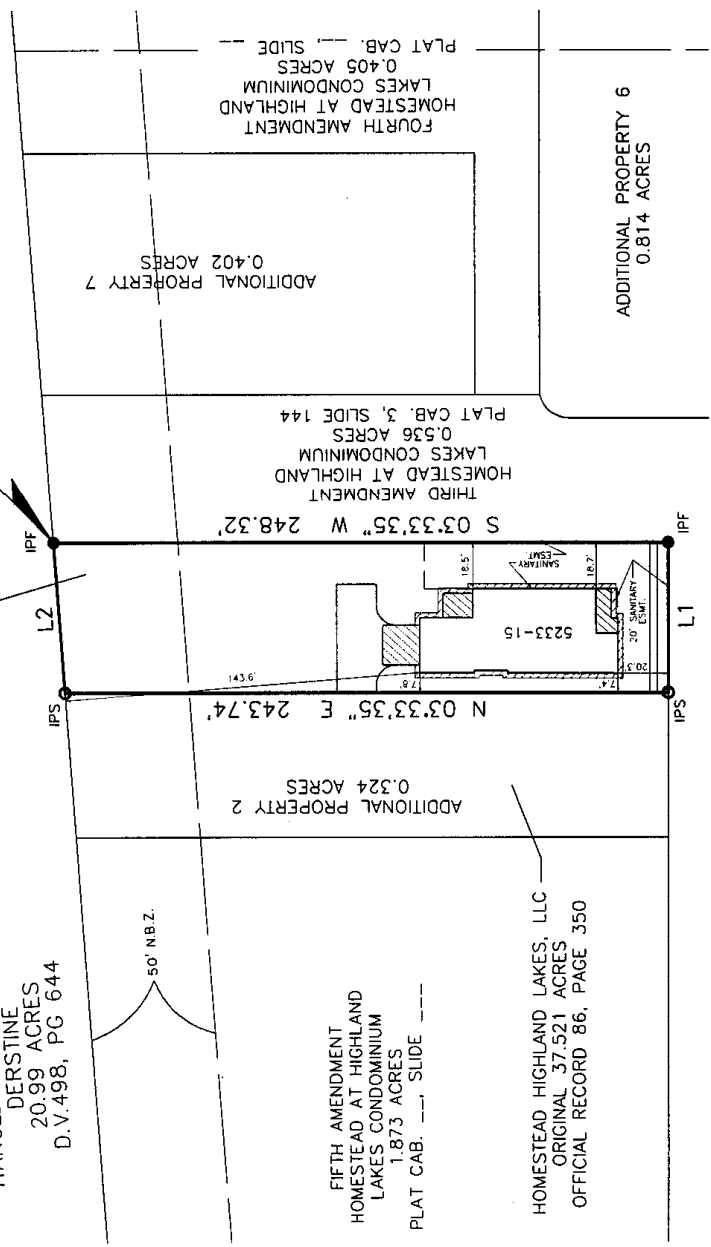
HAROLD B. & JOAN C.  
DERSTINE  
20.99 ACRES  
D.V.498, PG 644

50' N.B.Z.

FIFTH AMENDMENT  
HOMESTEAD AT HIGHLAND  
LAKES CONDOMINIUM  
1.873 ACRES  
PLAT CAB. --- SLIDE ---

HOMESTEAD HIGHLAND LAKES, LLC  
ORIGINAL 37.521 ACRES  
OFFICIAL RECORD 86, PAGE 350

POINT OF  
BEGINNING



**LEGEND**

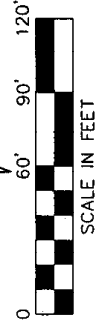
- IPF IRON PIN FOUND
  - IPS IRON PIN SET
  - ▲ RRSF RAILROAD SPIKE FOUND
  - △ RRSS RAILROAD SPIKE SET
  - ▨ LIMITED COMMON ELEMENT
  - ① NUMBER DESIGNATES UNIT HOMES
- ALL AREAS NOT DESIGNATED WITH A UNIT DESIGNATION OR AS LIMITED COMMON ELEMENTS ARE COMMON ELEMENTS

**FLOOD NOTE:**

THE SUBJECT PROPERTY LIES IN ZONE X (AREA DETERMINED TO BE OUTSIDE THE 500 YEAR FLOODPLAIN), AS DETERMINED BY GRAPHIC INTERPOLATION FROM THE FLOOD INSURANCE RATE MAP NUMBER 39041C-0245J, WITH AN EFFECTIVE DATE OF APRIL 21, 1999, PUBLISHED BY THE FEDERAL EMERGENCY MANAGEMENT AGENCY.

**BASIS OF BEARINGS:**

THE BEARINGS SHOWN HEREON ARE BASED ON THE GRID BEARING OF N 33°53'06" E FOR THE CENTERLINE OF WORTHINGTON ROAD IN THE OHIO STATE PLANE COORDINATE SYSTEM, NORTH ZONE, AS DETERMINED BY A SERIES OF GPS OBSERVATIONS ON SEPTEMBER 14, 1999.

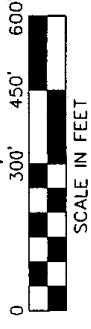
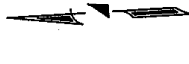
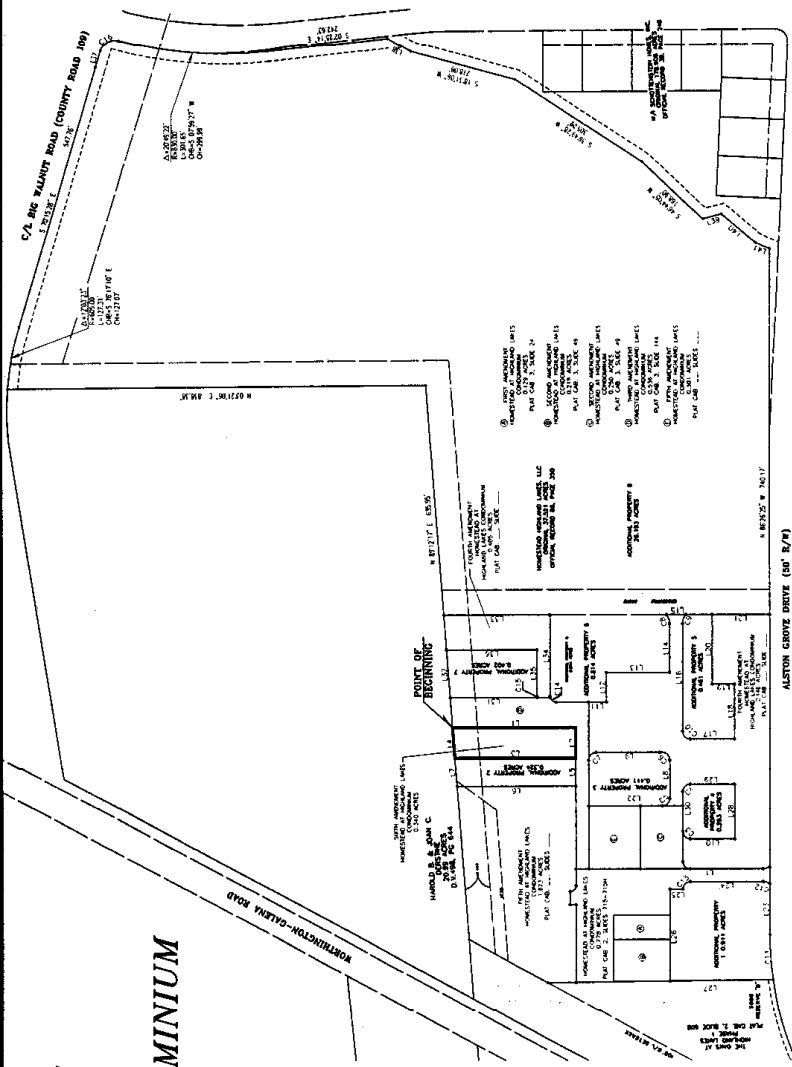


Prepared By:  
**R. D. Zande & Associates, Inc.**  
1283 Dublin Road  
Columbus, Ohio 43215

EXHIBIT C  
SIXTH AMENDMENT TO  
CONDOMINIUM DRAWINGS  
OF  
HOMESTEAD AT  
HIGHLAND LAKES CONDOMINIUM

LEGEND

- IRON PIN FOUND
- IRON PIN SET
- ▲ RAILROAD SPIKE FOUND
- △ RAILROAD SPIKE SET



Prepared By:  
R. D. Zande & Associates, Inc.  
1257 Dublin Road  
Columbus, Ohio 43215

LINE	BEARING	DISTANCE
L1	S 03°33'25" W	248.32'
L2	N 86°26'25" W	60.20'
L3	N 03°33'55" E	243.74'
L4	N 89°12'17" E	60.37'
L5	N 86°26'25" W	56.43'
L6	N 89°12'17" E	58.65'
L7	S 86°26'25" E	80.00'
L8	S 03°33'35" E	134.00'
L9	S 03°33'35" W	90.00'
L10	S 86°26'25" E	36.00'
L11	S 86°26'25" E	60.75'
L12	S 03°33'35" W	128.00'
L13	S 03°33'35" E	128.00'
L14	S 03°33'35" E	38.17'
L15	S 03°33'35" E	38.17'
L16	N 86°26'25" W	219.90'
L17	S 03°33'35" W	90.00'
L18	S 86°26'25" E	111.25'
L19	N 03°33'55" E	45.00'
L20	S 86°26'25" E	141.75'
L21	S 03°33'35" W	116.00'
L22	N 03°33'35" E	145.00'
L23	N 03°33'35" E	147.50'
L24	N 03°33'35" E	147.50'
L25	N 03°33'35" E	26.00'
L26	N 86°26'25" W	184.04'
L27	S 02°50'08" W	208.32'
L28	S 86°26'25" E	110.00'
L29	N 03°33'35" E	90.00'
L30	N 86°26'25" W	90.00'
L31	N 86°26'25" W	68.35'
L32	N 89°12'17" W	68.35'
L33	S 03°33'35" W	513.92'
L34	N 86°26'25" W	167.00'
L35	S 86°26'25" E	95.70'
L36	N 03°33'35" E	182.17'
L37	S 69°55'33" E	33.59'
L38	S 33°32'12" W	33.64'
L39	S 141°14'48" E	80.48'
L40	S 141°14'48" E	80.48'
L41	S 35°27'26" W	32.39'

CURVE	DELTA ANGLE	RADIUS	ARC LENGTH	CHORD BEARING	CHORD LENGTH
C3	90°00'00"	15.00'	23.56'	N 48°33'35" E	21.21'
C4	90°00'00"	15.00'	23.56'	S 41°26'25" E	21.21'
C5	90°00'00"	15.00'	23.56'	N 41°26'25" W	21.21'
C6	90°00'00"	15.00'	23.56'	S 48°33'35" W	21.21'
C7	90°00'00"	15.00'	23.56'	S 41°26'25" E	21.21'
C8	90°00'00"	30.00'	18.84'	S 67°24'13" E	19.57'
C9	90°00'00"	15.00'	23.56'	N 48°33'35" E	21.21'
C10	90°00'00"	15.00'	23.56'	N 89°00'56" E	89.11'
C11	08°53'19"	575.00'	89.20'	N 89°00'56" E	89.11'
C12	32°41'01"	25.00'	14.26'	S 19°54'06" W	14.07'
C13	89°56'10"	15.00'	23.55'	S 41°24'30" E	21.20'
C14	90°00'00"	12.000'	18.850'	N 48°33'35" E	16.971'
C15	03°46'30"	38.000'	2.500'	S 86°19'35" E	2.500'
C16	88°13'39"	30.000'	46.250'	S 25°43'42" E	41.130'

## EXHIBIT D

**SIXTH AMENDMENT  
DECLARATION OF CONDOMINIUM  
HOMESTEAD AT HIGHLAND LAKES CONDOMINIUM**

**Unit Types and Par Values**

**Unit Types:**

<b><u>Type</u></b>	<b><u>Description</u></b>
Devon	Unit containing two bedrooms, two baths, kitchen, living room and dining area, and a two car attached garage at street level, a basement, and contains approximately 3,016 gross interior square feet. In addition, some Units may have a screened porch or sunroom containing an additional 120 gross interior square feet.
Salem	Unit containing three bedrooms, two baths, kitchen, with dining area, laundry room and a two car attached garage at street level, a basement, and contains approximately 3,128 gross interior square feet. In addition, some Units may have a screened porch or sunroom containing an additional 202 gross interior square feet.
Devonshire	Unit containing three bedrooms, two baths, kitchen, living room and dining area, and a two car attached garage at street level, a basement, and contains approximately 3,131 gross interior square feet. In addition, some Units may have a screened porch and/or Florida room containing an additional 126 gross interior square feet, and/or a sun room containing an additional approximately 171 gross interior square feet.
Cassingham	Unit containing three bedrooms, two baths, kitchen with dining area, living room, laundry room, and a two car attached garage at street level, a basement, and contains approximately 3,454 gross interior square feet. In addition, some Units may have a screened porch or Florida room containing an additional 168 gross interior square feet.
Waltham	Unit containing three bedrooms, two baths, a kitchen with dining area, living room, eating area, laundry room, and a two car attached garage at street level, a basement, and contains approximately 3,485 gross interior square feet. As an option, some Units may have an additional living area containing an additional approximately 140 gross interior square feet. In addition, some Units may have a screened porch and/or a Florida room containing either an additional 174, 177 or 275 gross interior square feet.
Somerset	Unit containing a bedroom, one and one-half baths, a laundry room, kitchen, living room, and a two car attached garage at street level, a bedroom, a bath, and a loft on the partial second level, a basement, and contains approximately 3,456 gross interior square feet. As an option, some Units may have an optional bedroom containing an additional approximately 350 gross interior square feet. In addition, some Units may have a screened porch and/or Florida room containing an additional 241 gross interior square feet.
Brandon	Unit containing a bedroom, one and one-half baths, kitchen, great room, laundry room, breakfast/study area, and a two car attached garage at street level, two bedrooms and a bath on the partial second level, a basement, and contains approximately 3,405 gross interior square feet. In addition, some Units may have one or more sun room, screened porches, and/or Florida rooms containing either an additional 178, 182, or 262 gross interior square feet.
Fairfield	Unit containing a bedroom, one and one-half baths, kitchen, living room with dining area, laundry room, and a two car attached garage at street level, two bedrooms and a bath on the partial second level, a basement, and contains approximately 3,526 gross interior square feet. In addition, some Units may have a screened porch and/or Florida room containing an additional 169 gross interior square feet.
Hampton	Unit containing a bedroom, one and one-half baths, living room, study, kitchen with dining area, laundry room, and a two car attached garage at street level, two bedrooms and a bath on the partial second level, a basement, and contains approximately 3,522 gross interior square feet. Some Units may also have an optional extension of the owners' suite containing an additional 127 gross interior square feet. In addition, some Units may have a screened porch containing an additional 216 gross interior square feet and/or a Florida room containing an additional 120 or 216 gross interior square feet.

EXHIBIT D (Continued)

DECLARATION OF CONDOMINIUM  
HOMESTEAD AT HIGHLAND LAKES CONDOMINIUM

Unit Types and Par Values

Unit Types:

<u>Type</u>	<u>Description</u>
Ashton	Unit containing three bedrooms, two baths, dining room, kitchen, living room, laundry room, and a two car attached garage at street level, one bedroom on the partial second level, a basement, and contains approximately 3,844 gross interior square feet. In addition, some Units may have a screened porch and/or Florida room containing an additional 168 gross interior square feet.
Lexington	Unit containing a bedroom, one and one-half baths, a laundry room, kitchen, living room, and a two car attached garage at street level, a bedroom, a bath, and a loft on the partial second level, a basement, and contains approximately 3,420 gross interior square feet. In addition some Units may have an optional family room containing an additional 427 gross interior square feet, an optional bedroom containing an additional 350 gross interior square feet, and/or an optional enclosed or screened porch and/or Florida room containing an additional approximately 241 gross interior square feet.
Cambridge	Unit containing three bedrooms, two baths, kitchen, laundry room, dining area, and a two car attached garage at street level, a basement, and contains approximately 3,580 gross interior square feet. Some Units may have an optional enclosed or screened porch containing an additional approximately 120 gross interior square feet, and/or a screened porch or Florida Room containing an additional approximately 278 gross interior square feet. In addition, some Units may have an option family room containing an additional approximately 260 gross interior square feet.
Croyden	Unit containing a bedroom, one and one-half baths, laundry room, kitchen, dining area, and a two car attached garage at street level, two bedrooms and a bath on the partial second level, a basement, and contains approximately 3,850 gross interior square feet. Some Units may have an optional enclosed or screened porch containing an additional approximately 120 gross interior square feet, and/or a screened porch or Florida Room containing an additional approximately 278 gross interior square feet. In addition, some Units may have an option family room containing an additional approximately 260 gross interior square feet.
Darby	Unit containing a bedroom, one and one-half baths, laundry room, kitchen, dining area, and a two car attached garage at street level, two bedrooms and a bath on the partial second level, a basement, and contains approximately 3,750 gross interior square feet. Some Units may have an optional enclosed or screened porch containing an additional approximately 150 gross interior square feet, and/or a screened porch or Florida Room containing an additional approximately 278 gross interior square feet.
Norwich	Unit containing three bedrooms, two baths, laundry room, kitchen, dining area, and a two car attached garage at street level, two bedrooms and a bath on the partial second level, a basement, and contains approximately 3,180 gross interior square feet. Some Units may have an optional enclosed or screened porch containing an additional approximately 120 gross interior square feet or a screened porch or Florida room containing an additional approximately 278 gross interior square feet. In addition, some Units may have an option family room containing an additional approximately 278 gross interior square feet.

\* Some units have partial finished basements and/or sunrooms.

II. Par Values:

<u>Unit Type</u>	<u>Par Value</u>
Devon, Salem, Devonshire, Cassingham, Waltham, Lexington	1.00
Somerset, Brandon, Ashton, Norwich	1.05
Darby, Cambridge, Croyden, Fairfield, Hampton	1.10



## EXHIBIT E

SIXTH AMENDMENT  
DECLARATION OF CONDOMINIUM  
HOMESTEAD AT HIGHLAND LAKES CONDOMINIUM

Unit InformationI. EXISTING UNITS:

<u>Unit Designation</u>	<u>Type</u>	<u>Par Value</u>	<u>Undivided Interest</u>
5550-3*	Fairfield <sup>(1)</sup>	1.10	4.977%
5544-4	Brandon <sup>(2)</sup>	1.05	4.751
5143-2	Ashton <sup>(1)</sup>	1.05	4.751
5131-1	Lexington <sup>(1)</sup>	1.00	4.525
5557-13	Hampton <sup>(3)</sup>	1.10	4.977
5253-16	Waltham <sup>(4)</sup>	1.00	4.525
5577-22	Fairfield	1.10	4.977
5567-23	Devonshire	1.00	4.525
5546-36	Hampton <sup>(3)</sup>	1.10	4.977
5554-37	Ashton	1.05	4.751
5215-26	Fairfield	1.10	4.977
5283-30	Hampton	1.10	4.977
5162-5	Waltham <sup>(1)</sup>	1.00	4.525
5156-6	Devonshire	1.00	4.525
5148-7	Hampton <sup>(1)</sup>	1.10	4.978
5142-8	Lexington <sup>(1)</sup>	1.00	4.525
5136-9	Cassingham <sup>(1)</sup>	1.00	4.525
5130-10	Hampton <sup>(1)</sup>	1.10	4.978
5541-11	Fairfield <sup>(1)</sup>	1.10	4.978
5549-12	Devonshire <sup>(5)</sup>	1.00	4.525

II. UNITS ADDED HEREBY:

<u>Unit Designation</u>	<u>Type</u>	<u>Par Value</u>	<u>Undivided Interest</u>
5233-15	Ashton <sup>(1)</sup>	1.05	4.751
<b>TOTAL</b>			<b><u>100.000%</u></b>

\* Unit will be remodeled to include a standard garage door.

<sup>(1)</sup> Unit with Florida Room

<sup>(2)</sup> Unit with Florida Room containing an additional 178 square feet

<sup>(3)</sup> Unit with Florida Room containing an additional 216 square feet

<sup>(4)</sup> Unit with Florida Room containing an additional 275 square feet

<sup>(5)</sup> Unit with a screened porch